



BLAZETM

OUTDOOR KITCHENS + GRILLS

H·HOMEA
PREMIUM

HOMEA

www.homea.mx

Email: ventas@homea.mx

Whatsapp: (442)258.0251

Tel: (442)216.3552

Lada sin Costo: 01(800)701.2121

Our Story

We set out to create a line of grills and outdoor kitchen products that wouldn't break down.

That was the beginning for Blaze. We studied and inspected what was currently on the market, identified the weaknesses and then started from scratch. What emerged was a collection of products that were easy to use and engineered to last, backed by a best-in-class, lifetime warranty*—because we mean it.

*Learn more about our industry-leading warranty at blazegrills.com/warranty





Effortless by Design

The Blaze product line isn't complicated
(like other brands).

We design products that allow everyone to
experience their high quality. But simple to use and
maintain doesn't mean unsophisticated.

Our style combines sleek and modern elements so
that each Blaze product is constructed to meet our
standards of excellence and efficiency.





Engineered for Life

To this day, we build outdoor living products better.

Well after other brands have been left on the curb, Blaze grills and outdoor kitchen equipment will continue to serve as centerpieces for our customers' spaces. That's what makes us Blaze. Visit blazegrills.com to find a local or online retailer.

Better designs.
Purposefully simple

Better materials.
Stronger and superior

Better functionality.
Best-in-class, lifetime warranties





Our Warranty

Proud to Stand Behind Every Product

Blaze gas grills are backed by a best-in-class, lifetime warranty that warrants against any defects in the manufacturing and workmanship on the cooking grids, stainless steel housing, stainless steel burners, flame tamers, heat zone separators, control valves, and all other stainless steel components.

Electrical and ignition components are covered for one year after the date of purchase. Grills must be registered within thirty days for the warranty to apply.



Our Collections

We're proud to offer products for every outdoor cooking need, from the weekend griller to the most dedicated outdoor chef.

The cornerstone of our entire catalog, these grills—and their corresponding burners or specialty cookers—embody Blaze: effortless by design, engineered for life.



LBM

An affordable, commercial-style gas grill that any outdoor cook can operate and easily enjoy, the LBM shares the foundation of our higher-end models but without the added performance features.



LTE

The LTE is our original workhorse, featuring all the components you could ever need: cast stainless steel burners, patented triangular grill grates, and interior lighting. It's our bestseller for a reason.



LTE+

With all the same features as the LTE, the LTE+ offers strategic engineering enhancements to make your cooking experience even better—such as a lift-assist hood and an updated lighting system.



LTE PRO

The LTE PRO is our newest and most modern model. Its cutting-edge design includes a digital control panel and additional upgrades to provide intense power to users without requiring any extra effort.



LUX

In a class of its own, the LUX is an intentionally simplified and streamlined model built with the thickest stainless steel components for exceptional performance and a luxury aesthetic, cook after cook.





Outdoor Cooking

The beating heart of your backyard—explore the grills, specialty cookers, and power burners to create with confidence.

GAS GRILLS

LUX Gas Grill	14
LTE PRO Gas Grill	15
LTE+ Gas Grill	16
LTE+ Marine Grade Gas Grill	17
LTE Gas Grill	18
LBM Gas Grill	19

GRIDDLES

LTE PRO Gas Griddle	20
LTE+ Gas Griddle	21
LTE Gas Griddle	22

CHARCOAL GRILLS

Kamado Grill	23
Charcoal Grill	24

OUTDOOR OVEN

Outdoor Oven	25
--------------------	----

SIDE BURNERS + POWER BURNERS

Side Burners	26
Power Burners	27

COOKING ACCESSORIES

Grill + Griddle	28
Kamado	30

The dimensions listed in the following pages are subject to change and should be used for informational purposes only. Please check your product owner’s manual to verify cutout information.





3-BURNER/4-BURNER

LUX Gas Grill



From the streamlined style and exceptional strength of thick, heavy-duty 304-grade stainless steel construction to the ultra-efficient performance, every inch of the LUX is designed for an unmatched cooking experience.

All told, this grill is an eye-catching outdoor centerpiece that will impress guests with its luxury aesthetics, performance, and longevity.

Enjoy your Blaze grill freestanding on a cart or built into your outdoor kitchen island.

BLZ-4PRO-LP/NG

Dimensions: 44³/₁₆" W x 28³/₁₆" D x 24¹/₄" H
Cutout Dimensions: 42¹/₂" W x 23⁵/₁₆" D x 10¹/₂" H

BLZ-4PRO-CART-LTSC

Dimensions: 75¹/₁₆" W x 23³/₁₆" D x 35¹/₄" H

BLZ-3PRO-LP/NG

Dimensions: 34" W x 28³/₁₆" D x 24¹/₄" H
Cutout Dimensions: 32¹/₄" W x 23⁵/₁₆" D x 10¹/₂" H

BLZ-3PRO-CART-LTSC

Dimensions: 65¹/₂" W x 26³/₄" D x 34³/₄" H

- Heavy-duty, 304-grade stainless steel construction is backed by a best-in-class, lifetime warranty.
- 18,000 BTUs per burner for efficient cooking power.
- Push-and-turn flamethrower ignition with backup flashtube and crossover channels for each burner ensures a reliable flame with every start.
- Double-lined, 304 stainless steel grill hood protects the outer layer from heat discoloration and retains steady, high heat.
- 10,000-BTU infrared burner with an included rotisserie kit for slow-roasted dishes.
- The 12 mm-thick, heavy-duty hexagonal cooking rods soak up heat to produce exceptional sear marks.
- Professional-quality cast stainless steel H-burners deliver unrivaled cooking power and durability.
- Removable heat zone separators divide the cooking surface into individual temperature zones, putting you in command of every square inch of space.
- Sophisticated lighting system includes internal halogen lights and signature red LED-illuminated control knobs.

4-BURNER/5-BURNER

LTE PRO Gas Grill



Introducing the most advanced LTE model yet: the LTE PRO. Inspired by our modern new brand look, this grill is designed to provide even more power to users without requiring extra effort. That includes 14,000-BTU main burners, plus a 10,000-BTU rear burner for impressive zonal power.

The LTE PRO is built from heavy-duty 304-grade stainless steel and features stainless steel flame tamers to ensure the most even heat distribution across the grill surface. Like all Blaze grills, the LTE PRO is backed by a best-in-class, lifetime warranty, so you can buy confidently and take your cooking to the next level.

BLZ-4LTEPRO-LP/NG

Dimensions: 32¹/₂" W x 27" D x 22¹/₂" H
Cutout Dimensions: 30³/₄" W x 21¹/₄" D x 9¹/₂" H

BLZ-4LTEPRO-CART-LTSC

Dimensions: 63⁴/₁₆" W x 24¹/₂" D x 35⁵/₁₆" H

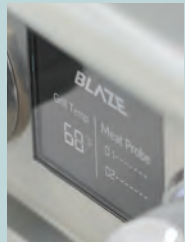
BLZ-5LTEPRO-LP/NG

Dimensions: 40¹/₂" W x 27" D x 22¹/₂" H
Cutout Dimensions: 38" W x 21¹/₄" D x 9¹/₂" H

BLZ-5LTEPRO-CART-LTSC

Dimensions: 71³/₁₆" W x 24¹/₂" D x 35¹/₄" H

FEATURES:



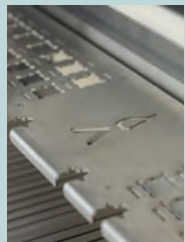
Digital Control Panel
Enhanced control panel reads temperature from grill surface + 2 meat probes.



Larger Capacity Fire Box
Increased hood clearance allows more food in the fire box or added rotisserie space.



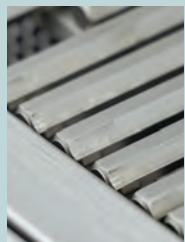
Ergonomic Handle
Spring-assisted grill hood with rolling "H" handle for the smoothest operation.



Innovative Warming Rack
Multipurpose, heavy-duty warming rack can now be stored in an upright position.



Upgraded Control System
Non-slip, knurled knobs feature LED lights with temperature indicators for safety.



Improved Grill Grates
Thicker 12 mm hexagonal grill grates retain more heat for intense searing.





FEATURES:



New Lighting System
Magnet latch triggers automatic interior halogen lighting while in use.



Easy-Lift Hood
Innovative hood-assist mechanism makes opening and closing effortless.



Upgraded Control Panel
Laser-cut knobs feature LED red backlighting for safety and a decorative accent.



Perforated Flame Tamers
Full-coverage flame-stabilizing grids minimize flare-ups and protect burners.



Heat Zone Separators
Removable separators divide the cooking surface into individual temperature zones.

4-BURNER/5-BURNER

LTE+ Gas Grill



Following up on the bestselling LTE was no small task, but our engineers didn't disappoint when designing the LTE+.

Built from heavy-duty 304-grade stainless steel, this grill includes a double-lined hood to protect the outer layer from heat discoloration and retain steady, high heat. Cast stainless steel linear burners deliver impressive cooking power, and at 14,000 BTUs apiece, they do so efficiently. Not to mention the 10,000-BTU infrared rear burner, which lets you put on a show with succulently slow-roasted dishes.

With the same impressive features as the LTE, along with new strategic engineering enhancements, the LTE+ provides the premium cooking experience every outdoor cook deserves.

BLZ-4LTE3-LP/NG
Dimensions: 32½" W x 25¾" D x 21¼" H
Cutout Dimensions: 30⅝" W x 21¼" D x 8½" H

BLZ-4-CART-SC
Dimensions: 56¼" W x 22⅞" D x 35½" H

BLZ-5LTE3-LP/NG
Dimensions: 39½" W x 25¾" D x 21¼" H
Cutout Dimensions: 38⅝" W x 21¼" D x 8½" H

BLZ-5-CART-SC
Dimensions: 63⅝" W x 22⅞" D x 35½" H

*blazegrills.com/patent

4-BURNER/5-BURNER

LTE+ Marine Grade Gas Grill



For those in costal climates, Blaze offers LTE+ models built from marine grade 316L stainless steel, an alloy with extra resistance to saltwater environments. It's the only marine grade grill in its class.

This 4-burner grill is also rated for multi-user applications such as multi-family dwellings, apartments, hotels, and, of course, seaside condos. Under this 1-year multi-family warranty, Blaze also extends its usual lifetime coverage to include labor charges.

Also available in the LTE Gas Grill.

BLZ-4LTE3MG-LP/NG
Dimensions: 32½" W x 25¾" D x 21¼" H
Cutout Dimensions: 30⅝" W x 21¼" D x 8½" H

BLZ-4LTE2MG-LP/NG
Dimensions: 32½" W x 25¾" D x 21¼" H
Cutout Dimensions: 30⅝" W x 21¼" D x 8½" H

BLZ-4-CART-SC
Dimensions: 56¼" W x 22⅞" D x 35½" H

*blazegrills.com/patent

- New automatic safety glow interior halogen lighting keeps lights on during use for better visibility.
- An innovative hood-assist mechanism makes opening and closing the grill effortless.
- Laser-cut control knobs feature LED red backlighting for safety and a signature decorative accent.
- Patented* 9 mm triangular cooking rods maximize your searing capabilities.
- 14,000 BTUs per burner for the most efficient cooking power + 10,000-BTU infrared rear.
- Designed to minimize flare-ups, the perforated full-coverage flame-stabilizing grids also serve as excellent protection for the burners below.
- Cast stainless steel linear burners lit by a push-and-turn flamethrower primary ignition system.
- Removable heat zone separators divide the cooking surface into individual temperature zones, putting you in command of every square inch of space.
- Heavy-duty, 304-grade stainless steel construction with double-lined grill hood protects outer layer from heat discoloration and retains steady, high heat.





4-BURNER/5-BURNER

LTE Gas Grill



Even with a signature LED-illuminated control system to complement the LTE’s sleek, durable 304-grade stainless steel design, we prioritized an accessible price point.

Practical features, like an infrared rear burner and removable heat-zone separators, combined with top-of-class performance, make grilling for friends and family more enjoyable and easier than ever.

Available as a freestanding grill on a cart or built into your outdoor kitchen island. Marine Grade LTE option included.

BLZ-4LTE2-LP/NG
Dimensions: 32½" W x 25¾" D x 21¼" H
Cutout Dimensions: 30⅝" W x 21¼" D x 8½" H

BLZ-4-CART-SC
Dimensions: 56¼" W x 22⅞" D x 35½" H

BLZ-5LTE2-LP/NG
Dimensions: 39½" W x 25¾" D x 21¼" H
Cutout Dimensions: 38⅝" W x 21¼" D x 8½" H

BLZ-5-CART-SC
Dimensions: 63⅝" W x 22⅞" D x 35½" H

*blazegrills.com/patent

- Patented* 9 mm triangular cooking rods maximize your searing capabilities.
- 14,000 BTUs per burner for the most efficient cooking power.
- 10,000-BTU infrared rear burner that lets you put on a show with succulently slow-roasted dishes.
- Designed to minimize flare-ups, the perforated full-coverage flame-stabilizing grids also serve as excellent protection for the burners below.
- Illuminated control knobs have red LED lights for sophisticated accent.
- Professional-quality cast stainless steel linear burners deliver impressive cooking power.
- Push-and-turn flamethrower primary ignition system delivers a fast start every time.
- Removable heat zone separators divide the cooking surface into individual temperature zones, putting you in command of every square inch of space.
- Double-lined, 304 stainless steel grill hood protects outer layer from heat discoloration and retains steady, high heat.
- Heavy-duty, 304-grade stainless steel construction is backed by a best-in-class, lifetime warranty and Blaze’s top-notch customer support.



3-BURNER/4-BURNER

LBM Gas Grill



As the Luxury Builder Model, this Blaze collection provides affordable, commercial-style gas grills that any outdoor cook can easily enjoy.

No matter the installation site—whether it’s a multifamily dwelling, apartment complex, or common backyard—these grills are built to last and turn everyone into a grill master.

The LBM is available in 3-burner and 4-burner configurations with an optional cart for freestanding use.

BLZ-3LBM-LP/NG
Dimensions: 25" W x 25¾" D x 21¼" H
Cutout Dimensions: 23¼" W x 21¼" D x 8½" H

BLZ-3-CART-SC
Dimensions: 49" W x 22⅞" D x 35½" H

BLZ-4LBM-LP/NG
Dimensions: 32½" W x 25¾" D x 21¼" H
Cutout Dimensions: 30⅝" W x 21¼" D x 8½" H

BLZ-4-CART-SC
Dimensions: 56¼" W x 22⅞" D x 35½" H

- Commercial-quality, 304-grade stainless steel tube burners feature 14,000 BTUs of cooking power each.
- Double-lined, 304 stainless steel grill hood protects outer layer from heat discoloration and retains steady, high heat.
- Full-width, roll-out drip tray and removable lower heat baffles for easy cleanup.
- Removable heat zone separators divide the cooking surface into individual temperature zones, putting you in command of every square inch of space.
- Designed to minimize flare-ups, the perforated flame-stabilizing grids also serve as excellent protection for the burners below.
- Durable, heavy-duty 8 mm round stainless steel cooking rods provide exceptional sear marks.
- Push-and-turn flamethrower primary ignition system delivers a fast start every time.



FEATURES:



Heavy-Duty Surface
Reinforced stainless steel cooking surface retains more heat.



Digital Control Panel
Enhanced control panel reads temperature from 3 zones + 3 meat probes.



Adjustable Surface
Integrated leveling screws can adjust the surface according to foods being cooked.



Full-Size Drip Trough
Drop-in-place drip trough simplifies grease management and improves safety.



Ergonomic Handle
Ergonomic “H” handle with rotating center ensures ease of use when lifting the lid.



Sound Dampers
Cushioned sound dampers prevent the attached lid from ever slamming shut.

40-INCH

LTE PRO Gas Griddle



Built with a reinforced cooking surface and attached lid, the LTE PRO Griddle is the heaviest in its class, promising exceptional durability and longevity. Its modern design ensures even heat across the 40-inch surface for the most consistent results.

The three separate cooking zones provide complete cooking versatility, with the three burners efficiently producing 15,000 BTUs each, for a total of 45,000 BTUs. Add in innovations like non-slip, knurled knobs featuring LED lights with temperature indicators for safety and you’ve got a restaurant-caliber griddle that delivers professional-grade performance in your yard.

BLZ-GRIDDLE40-LP/NG
Dimensions: 40” W x 29” D x 16⅓” H
Cutout Dimensions: 37½”W x 24¼” D x 11¾” H

BLZ-GRIDDLE40-CART-LTSC
Dimensions: 72” W x 27⅝” D x 35¾” H

30-INCH

LTE+ Gas Griddle



An upgraded griddle for backyard chefs of all levels, the 30-Inch LTE+ includes new and improved features such as an updated control panel and sound dampers, as well as a reinforced cooking surface. In other words, it’s a premium cooking experience.

The 304 stainless steel construction now includes a double-walled, attached lid. Two 18,000-BTU burners offer efficient cooking power, and with the strategic enhancements found across the entire Blaze LTE+ lineup—such as larger peepholes that allow for safe and clear monitoring of the burners—this griddle is ready for your outdoor kitchen.

BLZ-GRIDDLE-LTE3-LP/NG
Dimensions: 30⅞” W x 28¼” D x 16⅓” H
Cutout Dimensions: 28¼”W x 24¼” D x 11¾” H

BLZ-GRIDDLELTE3-CART-SC
Dimensions: 54⅞” W x 25” D x 36¼” H

FEATURES:



Updated Control System
New panel with knobs that shine red when gas is flowing for added safety.



Full-Size Drip Trough
Drop-in-place drip trough simplifies grease management for effortless cleanup.



Adjustable Surface
Integrated leveling screws can adjust the surface according to foods being cooked.



Improved Flattop
Cooking surface ensures performance at even the highest temperatures.



Sound Dampers
Cushioned sound dampers prevent the lid from ever slamming closed.



Attached Lid
Newly added lid protects griddle surface from outdoor elements.





30-INCH

LTE Gas Griddle



By designing the original 30-Inch LTE Griddle, Blaze entered a new outdoor cooking category while maintaining the same results you'd expect from the leading grill brand.

Like our gas models, we chose heavy-duty, 304-grade stainless steel for maximum durability, along with the LTE series' LED red control knob illumination.

The stainless steel burners are U-shaped, providing exceptionally even heat across the 495 square inches of cooking surface, which can be used for everything from stir fry and searing steaks to a full-scale breakfast.

BLZ-GRIDDLE-LTE-LP/NG

Dimensions: 30" W x 28³/₈" D x 12³/₈" H
Cutout Dimensions: 28¹/₈" W x 24³/₈" D x 12" H

BLZ-GRIDDLE-CART-SC

Dimensions: 56¹/₄" W x 22¹/₈" D x 35¹/₂" H

- Heavy-duty, commercial-grade stainless steel construction offers unrivaled longevity.
- 18,000 BTUs of cooking power in each U-shaped burner provide even heat across the griddle surface.
- Reliable flame thrower ignition makes lighting the griddle simple, while the backup flash-tube ignition with crossover channels ensures you can always ignite the griddle.
- Full-width grease trough directs drippings into the drip tray for effortless cleanup.
- Enjoy your Blaze griddle freestanding on a cart or built into your outdoor kitchen island.

20-INCH CAST ALUMINUM

Kamado Grill



Blaze took lessons learned from centuries of kamado-style cooking and introduced a modern twist by building this patented kamado* with 1-inch-thick solid cast aluminum.

This cast aluminum design provides unparalleled durability—whether it's exposed to extreme saltwater or any other conditions that would wreak havoc on a ceramic kamado—plus the same outstanding temperature control and heat retention traditional kamados are so well known for.

With a lifetime warranty on the cast aluminum body and other key components, kamado purists can confidently break from tradition to experience a superior grill engineered for luxury cooking.

Also available as a built-in model, in addition to a freestanding unit.

BLZ-20-KAMADO

Dimensions: 21¹/₈" W x 27¹/₈" D x 33⁷/₈" H

BLZ-20-KMDO-CART-SC

Dimensions: 48¹/₄" W x 28¹/₄" D x 38¹/₂" H

FEATURES:



Molded Exhaust Cap
Cast-molded exhaust cap allows for precise heat control.



1-Inch-Thick Cast Aluminum
This design adds unparalleled durability.



Lift Assist
Pre-installed lid hinge with lift assist allows for easy opening and burping of the kamado.



Cooking Grid
20-inch diameter stainless steel hex-shaped cooking surface provides exceptional heat retention and beautiful sear marks.



Hinged Cooking Surface
Hinged cooking surface allows for the convenient addition of wood or charcoal without removing the grates.



Tongue-and-Groove Seal
Instead of the traditional gasket design, which often needs replacement because of wear and tear, the tongue-and-groove seal helps the lid last longer and better lock in smoke.

CHARCOAL GRILLS



32-INCH

Charcoal Grill



We purposefully engineered the Charcoal Grill with the same thought that goes into all our products, starting with heavy-duty, 304-grade stainless steel construction for rugged durability in the outdoors.

We followed that up with our best-in-class, lifetime warranty as well as a double-lined grill hood that wards off heat discoloration and efficiently traps heat. And once you get under that hood, you will find even more to love about our affordable, commercial-style charcoal grill.

- Hook-and-hang cooking grids make it possible to add charcoal and wood while cooking.
- Adjustable tray can be lowered closer to the coals for high-heat grilling or raised for slow cooking.
- Rear vent can be adjusted for precise airflow control, which, in turn, affects temperature.
- Removable charcoal tray and full-width, pull-out ash pan lead to hassle-free cleaning.
- Enjoy your Blaze grill freestanding on a cart or built into your outdoor kitchen island.

BLZ-4-CHAR

Dimensions: 32½" W x 25¾" D x 21¼" H
Cutout Dimensions: 30⅝" W x 21¼" D x 8½" H

BLZ-4-CART-SC

Dimensions: 56¼" W x 22⅞" D x 35½" H

26-INCH

Outdoor Oven



Simple to use and ingeniously designed, the Outdoor Oven can produce all varieties of restaurant-quality pizza. With a rotisserie basket and cooking racks, you'll just as easily prepare a sumptuous rack of lamb as a delicious personal pie.

After all, this outdoor unit is designed to be a functional oven, which means you can cook just about anything in it and do so in the beauty of the backyard.

Available in freestanding, countertop, and built-in configurations.

BLZ-26-PZOVN-LP/NG

Dimensions: 32½" W x 27" D x 22½" H
Cutout Dimensions: 8" H x 24⅞" W x 24.2" D

BLZ-26-PZOVN-TBL

Dimensions: 27.813" W x 29" D x 35.527" H

BLZ-26-PZOVN-CART2

Dimensions: 32¾" H x 27⅞" W x 25⅞" D

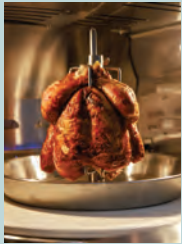
BLZ-26-PZOVN-CART

Dimensions: 35½" H x 27.813" W x 25.182" D

FEATURES:



Rotating Ceramic Stone
17-inch rotating ceramic pizza stone provides an even bake and prevents the need to hand-turn pizza.



Rotisserie Kit + 2 Cooking Racks
Vertical rotisserie rod with drip tray and dual cooking racks allow for many food options in addition to pizza.



Digital Temperature Screen
Digital screen with connected meat probes offers the most accurate cooking temperatures.



Double-Walled Glass Door
Interior lighting and double-pane glass oven door removes the need to regularly open oven to check food, preventing heat loss.



High Temperature Range
Reaches temperatures as high as 550°F while using the dual cooking racks with the stone surface capable of hitting over 700°F.



BURNERS

Side Burners + Power Burners

To complement your Blaze grill and complete your outdoor kitchen, we offer a selection of side burners and power burners.

Whatever your demands, Blaze burners deliver a reliable flame with every start, thanks to the push-and-turn ignition system also found on our grills.

Each burner in the set features a stainless steel cover to block the outdoor elements, while the LTE, LTE+, and LUX models sport signature red LED lighting along with full-width drip trays for speedy cleanup.

Our side burners and power burners are all built with 304-grade stainless steel and covered by the best-in-class, lifetime warranty upon which the Blaze brand was built.



Drop-In Single Burner

- A heavy-duty, 12,000-BTU brass burner provides superior heat output.

BLZ-SB1-LP/NG
Dimensions: 12½" W x 19½" D x 4½" H
Cutout Dimensions: 11¼" W x 18" D x 2⅜" H



LUX Built-In High-Performance Power Burner

- A staggering total of 60,000 BTUs between the 25,000-BTU inner ring and the 35,000-BTU outer ring.
- Efficient design and narrow width save cooking time and counter space.
- Burner rings are circled by a stainless steel guard that blocks wind interference and channels maximum heat efficiency.

BLZ-PROPB-LP/NG
Dimensions: 15¾" W x 23⅝" D x 10¼" H
Cutout Dimensions: 14" W x 19½" D x 9¼" H



LTE+ Built-In Double Side Burner

- Two heavy duty 12,000-BTU brass-plated burners churn out powerful but controlled heat.
- LED-illuminated control system with safety glow lighting match LTE+ grills.
- Stainless steel construction is durable in any outdoor environment.
- Removable stainless steel cover shields burner from outdoor elements when not in use.

BLZ-SB2-LTE3-LP/NG
Dimensions: 12.63" W x 22.63" D x 9¾" H
Cutout Dimensions: 10¾" W x 20¾" D x 8½" H



LTE Built-In Double Side Burner

- Two heavy-duty, 12,000-BTU brass burners churn out powerful but controlled heat.

BLZ-SB2LTE-LP/NG
Dimensions: 15¾" W x 22⅝" D x 9⅞" H
Cutout Dimensions: 14" W x 19½" D x 8" H



LTE+ Built-In High-Performance Power Burner

- 25,000-BTU inner ring and 35,000-BTU outer ring combine for an impressive 60,000 BTUs of efficient heating power.
- Stainless steel guard surrounds the burner rings, protecting them from wind and concentrating heat for maximum effectiveness.
- Powerful design brings water to a boil in half the time compared to other burners on the market.
- Narrow width allows more room in your outdoor kitchen for another component or just additional counter space.
- LED-illuminated control system with safety-glow lighting matches LTE+ grills.

BLZ-PBLTE3-LP/NG
Dimensions: 15¾" W x 23" D x 9.19" H
Cutout Dimensions: 14" W x 19½" D x 8" H



LTE Built-In High-Performance Power Burner

- 25,000-BTU inner ring and 35,000-BTU outer ring combine for an impressive 60,000 BTUs of efficient heating power.
- Stainless steel guard surrounds the burner rings, protecting them from wind and concentrating heat for maximum efficiency.

BLZ-PBLTE-LP/NG
Dimensions: 15¾" W x 22⅝" D x 9⅞" H
Cutout Dimensions: 14" W x 19½" D x 8" H



BURNERS



GRILL + GRIDDLE

Accessories

Getting the most out of your Blaze grill can be as simple as having the right accessories on hand. Blaze has every upgrade to fully enjoy the elegance, purpose, and strength of our premium outdoor kitchens and grills.



Pizza Stone

TRADITIONAL GRILL
BLZ-PZST

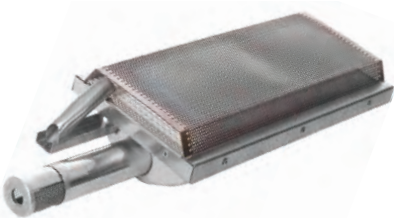
LUX GRILL
BLZ-PRO-PZST-2



Rotisserie Kit

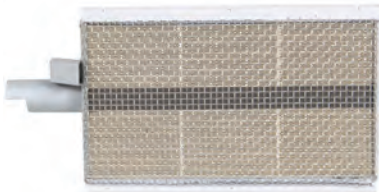
32-INCH GRILL
BLZ-34-ROTIS-SS

40-INCH GRILL
BLZ-5-ROTIS-SS



Infrared Searing Burner

BLZ-IRN



Professional Infrared Searing Burner

BLZ-PRO-IR



Stainless Steel Griddle Plate

14-INCH
BLZ-14-SSGP

24-INCH
BLZ-24-SSGP-2



1/2-Inch Natural Gas Hose with Quick Disconnect

BLZ-NG-HOSE

Smoker Box



LTE + LBM GRILLS
BLZ-SMBX

EXTRA-LARGE SMOKER BOX
BLZ-XL-SMBX

LUX GRILL
BLZ-PRO-SMBX

LUX EXTRA-LARGE SMOKER BOX
BLZ-XL-PROSMBX

PORTABLE GRILL
BLZ-PROPRT-SMBX

LED Light Kit



BLZ-4B-LED-AMBER, BLUE, WHITE
BLZ-5LTELED-AMBER, BLUE, WHITE
BLZ-2LED-AMBER, BLUE, WHITE
BLZ-3PROLED-AMBER, BLUE, WHITE

Built-In Grill and Cart Covers



BUILT-IN
3BICV
4BICV
5BICV
3PROBICV
4PROBICV
4LTEPROBICV
5LTEPROBICV
20KMBICV
GRDBICV
GRDLTE3BICV
GRD40BICV
SB2BICV
PBBICV
1PROPRT-CVR
26PZOVN-BICV
26PZOVN-TBCV
SSISLCVR

CART
3CTCV
4CTCV
5CTCV
3PROCTCV
4PROCTCV
4LTEPROCTCV
5LTEPROCTCV
GRDCTCV
GRDLTE3CTCV
GRD40CTCV
26PZOVN-CTCV
KMDOCTCVR





KAMADO

Accessories



Kamado Cart

- Stainless steel construction is durable in outdoor conditions.
- Adds practical storage for your tools and accessories.
- Side shelves provide a convenient work area while grilling.
- Heavy-duty casters allow you to reposition the grill as needed.

BLZ-20-KMDO-CART-SC
 Dimensions: 48¼" W x 28¼" D x 38½" H



Easy-Light Indirect Cooking System With Moisture-Enhancing Pan

- Heavy-duty, 304-grade stainless steel construction for lasting durability.
- Charcoal basket lets you section off fuel for indirect heat, or for direct infrared cooking in tandem with the Kamado Rotisserie Kit.
- The lower basket chamber doubles as a chimney starter for use with charcoal lighters and other ignition methods.
- Stainless steel drip pan catches essential drippings for pan gravies and bastes, plus it can act as a water pan for added moisture when smoking.

BLZ-KMDO-CBDRP



4-in-1 Stainless Steel Cooking Plate

- Solid, 304-grade stainless steel brings the longevity you need for years of enjoyable outdoor cooking.
- Provides a layer of heat deflection for low-and-slow cooking.
- Serves as a pizza stone to give you the perfect crust every time.
- Functions as a cooking plate that helps add a hint of smoke to your favorite sauces, stews, soups, and gumbos.
- Can be used as a griddle plate for breakfast and full-crust searing.

BLZ-KMDO-15SSP



Rotisserie Kit With Waterproof Motor

- Waterproof rotisserie motor is designed to thrive in the outdoor elements.
- Compatible with Easy-Light Indirect Cooking System and Moisture-Enhancing Pan.
- Adds versatility to your outdoor cooking setup by allowing you to slow-roast food over the coals.

BLZ-KMDO-2-ROTIS



Stainless Steel Kamado Handles

- Sturdy construction for a long lifespan in the outdoors.
- Offer a solid grip when moving your kamado.
- Feature insulated spacers that keep the handles from getting overly hot when the grill is in use.

BLZ-KMDO-SSHAND



Kamado Covers

- Greatly extends the lifespan of your grill, making it a better investment over time.
- Vinyl cover is water-resistant to shield the grill from elements like dirt, dust, and rain.
- Designed with a soft felt backing that will not scratch the exterior of the grill when covered.

**20KMBICV
 20KMCTCV
 KMDOCTCVR**





Kitchen Components

Add safety and functionality to your outdoor kitchen with components that stand on their own.

VENT HOODS

Vent Hoods	34
Duct Covers	35

SAFETY + FUNCTIONAL ESSENTIALS

Wind Guards	36
Drip Pan Flame Guards	36
Island Vent	36
Grill + Griddle Insulated Jackets	37

UPGRADES

Ceramic Flame Tamers	38
----------------------------	----

REFRIGERATION + COOLING

Refrigeration + Cooling	39
Design Upgrades	40

CABINETRY

Roll-Out Trash Drawers	42
Access Doors	42
Access Drawers	43
Combo Door + Drawers	43
Accessory Components	44

The dimensions listed in the following pages are subject to change and should be used for informational purposes only. Please check your product owner’s manual to verify cutout information.





36-INCH/42-INCH/48-INCH

Vent Hoods



The Outdoor Vent Hoods ensure smoke never creates concern, thanks to a deep hood canopy and powerful motor system.

Designed to assist with dispersing accumulated gases and exhaust, these hoods feature industry-leading 36-inch, 42-inch, or 48-inch depth, offering more coverage of the cooking space to capture larger quantities of smoke and heat.

That much size and power allow our hoods to be installed farther from the grill than other hoods, creating a cleaner and less cluttered cooking area.

- Large canopy depth maximizes the capture range of the vent hood.
- Independent and individually controlled 1,000-CFM, 4-speed motors provide exceptional smoke removal.
- Higher allowable installation height creates a more comfortable work area.
- 4 halogen lights illuminate your cooking surface any time of day or night.
- Innovative grease-free controls with lighted facing.
- Reversible motors and back-venting options keep you in constant control.

BLZ-36-VHOOD

Dimensions: 36" W x 36" D x 18" H

BLZ-42-VHOOD

Dimensions: 42" W x 36" D x 18" H

BLZ-48-VHOOD

Dimensions: 48" W x 36" D x 18" H



VENT HOOD

Duct Covers

Made to conceal the ventilation ducting in your outdoor kitchen, duct covers create a clean and finished look. These models telescope to the appropriate height of your installation for a seamless fit.

LOW CEILING - 36-INCH

BLZ-36-VHOOD-DCVR-12

Dimensions: 36" W x 18" D x 12" H

HIGH CEILING - 36-INCH

BLZ-36-VHOOD-DCVR-22

Dimensions: 36" W x 18" D x Extends 22"-41" H

LOW CEILING - 42-INCH

BLZ-42-VHOOD-DCVR-12

Dimensions: 42" W x 18" D x 12" H

HIGH CEILING - 42-INCH

BLZ-42-VHOOD-DCVR-22

Dimensions: 42" W x 18" D x Extends 22"-41" H

LOW CEILING - 48-INCH

BLZ-48-VHOOD-DCVR-12

Dimensions: 48" W x 18" D x 12" H

HIGH CEILING - 48-INCH

BLZ-48-VHOOD-DCVR-22

Dimensions: 48" W x 18" D x Extends 22"-41" H





KITCHEN COMPONENTS

Safety + Functional Essentials



Wind Guards

Wind guards protect your grill (and your cook) in high wind areas, such as coastal regions or balconies. This guard helps to ensure the burners stay lit and stable, greatly reducing the risk of flare-ups. Able to withstand 25 mph winds, our wind guards will help to create a more controlled cooking environment.

- 3-BURNER TRADITIONAL GRILL

BLZ-WG-25
- 4-BURNER TRADITIONAL + LTE GRILLS

BLZ-WG-32
- 5-BURNER TRADITIONAL + LTE GRILLS

BLZ-WG-40
- 3-BURNER LUX GRILL

BLZ-PROWG-34
- 4-BURNER LUX GRILL

BLZ-PROWG-44



Drip Pan Flame Guards

These drip tray flame guards add an extra layer of safety to your grill, making it an upgrade worth investing in. This perforated accessory sits inside of the drip tray to reduce the chance of a grease fire, allowing you to cook with confidence.

- 3-BURNER TRADITIONAL GRILL

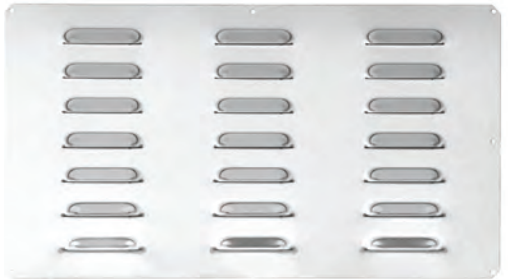
BLZ-3-DPFG
- 4-BURNER TRADITIONAL + LTE GRILL

BLZ-4-DPFG
- 5-BURNER TRADITIONAL + LTE GRILL

BLZ-5-DPFG
- 3-BURNER LUX GRILL

BLZ-3PRO-DPFG
- 4-BURNER LUX GRILL

BLZ-4PRO-DPFG



Island Vent

Designed with commercial-grade 304 stainless steel, the 6" x 14" panels provide adequate airflow to your island. Good for both propane and natural gas, these panels cover ventilation openings for a clean aesthetic.

- BLZ-ISLAND-VENT

Dimensions: 14" W x 6" H

Cutout Dimensions: 12¾" W x 5" H



Grill + Side Burner Insulated Jackets

Our insulated jackets are a safety essential when installing your Blaze gas appliance into a combustible enclosure such as an outdoor kitchen or island.

Plus, in addition to serving as a protective barrier from heat, these stainless steel jackets add a streamlined look to your kitchen or island. Insulated jackets are available for all built-in gas appliances to ensure safety during any style of cooking.



- 3-BURNER GRILL

BLZ-3-IJ

Dimensions: 27¼" W x 23" D x 9¾" H

Cutout Dimensions: 25⅞" W x 22¼" D x 9⅝" H

- 4-BURNER GRILL

BLZ-4-IJ

Dimensions: 34¾" W x 23" D x 9¾" H

Cutout Dimensions: 33" W x 22¼" D x 9⅝" H

- 5-BURNER GRILL

BLZ-5-IJ

Dimensions: 42⅜" W x 23" D x 9¾" H

Cutout Dimensions: 40¼" W x 22¼" D x 9⅝" H

- 3-BURNER LUX GRILL

BLZ-3PRO-IJ

Dimensions: 36¾" W x 25⅞" D x 11¼" H

Cutout Dimensions: 34⅞" W x 24½" D x 11" H

- 4-BURNER LUX GRILL

BLZ-4PRO-IJ

Dimensions: 46½" W x 25⅞" D x 11¼" H

Cutout Dimensions: 44⅞" W x 24½" D x 11" H

- 4-BURNER LTE PRO GRILL

BLZ-4-IJ2

Dimensions: 34¾" W x 22½" D x 10" H

Cutout Dimensions: 33⅞" W x 21¼" D x 10" H

- 5-BURNER LTE PRO GRILL

BLZ-5-IJ2

Dimensions: 42" W x 22½" D x 10" H

Cutout Dimensions: 40¼" W x 21¼" D x 10" H

- SIDE BURNER

BLZ-SB2-IJ

Dimensions: 14½" W x 23" D x 9¾" H

Cutout Dimensions: 13" W x 22¼" D x 9⅝" H

- POWER BURNER

BLZ-PB-IJ

Dimensions: 18⅞" W x 21⅞" D x 9" H

Cutout Dimensions: 33" W x 22¼" D x 9⅝" H

- LUX POWER BURNER GRILL

BLZ-PROPB-IJ

Dimensions: 18⅞"W x 21⅞"D x 10¼" H

Cutout Dimensions: 16½" W x 20⅝" D x 10¼" H

- GRIDDLE

BLZ-GRIDDLE-IJ

Dimensions: 32⅞" W x 26⅞" D x 13⅞" H

Cutout Dimensions: 30⅝" W x 25" D x 12¾" H

- LTE PRO GRIDDLE

BLZ-GRIDDLE40-IJ

Dimensions: 41¼" W x 26½" D x 11½" H

Cutout Dimensions: 40¼" W x 25¼" D x 11½" H

- PIZZA OVEN

BLZ-26-PZOVN-IJ

Dimensions: 28¼" W x 26.28" D x 9⅞" H

Cutout Dimensions: 26½" W x 25½" D x 9⅞" H



UPGRADES

Ceramic Flame Tamers



Intended to replace your standard flame tamer set, these Ceramic Flame Tamers are the perfect upgrade for those seeking to enhance their grilling capabilities.

Enjoy better-tasting food as the ceramic rods absorb drippings from your cook and vaporize them, creating a flavorful smoke that infuses into the food. But vaporization doesn't mean flare-ups because the round design allows grease to easily roll off, making grilling safe and more convenient, especially when cooking fatty meats.

It's the perfect addition to your Blaze grill, providing even heat and maximum flavor with minimum maintenance.

Designed for use with all sizes of LBM, LTE, & LTE+ gas grills only. Not for use with LUX grills.

BLZ-CRM-TMR

- 304 stainless steel flame tamer tray paired with ceramic rods delivers enhanced flavor.
- Built to withstand high temperatures without deteriorating and less likely to rust/degrade.
- Engineered to deliver intense yet uniform heat, perfect for cooking a variety of dishes.
- Reduce flare-ups with round rod design, allowing grease to vaporize and roll off easily.
- Food debris can be easily burned off after each cook for the easiest cleanup.

KITCHEN COMPONENTS

Refrigeration + Cooling

Blaze kitchen refrigeration and cooling components provide you space with convenient access to chilled beverages and more while offering your outdoor island a sleek, streamlined aesthetic.

Featuring ample storage space in varied configurations, each refrigerator offers powerful qualities like premium 304-grade stainless steel construction, crystal-clear white LED interior lighting, intuitive digital thermostats with temperature displays, and Blaze's top-notch 1-year limited warranty and sterling customer service.



15-In 3.2 Cu. Ft. Outdoor Rated Refrigerator

- Holds up to 74 cans for generous crowd refreshment.
- Slim design is ideal for intimate spaces, creating a sleek look for any setting.

BLZ-SSRF-15
Dimensions: 14.96" W x 23¾" D x 34¼" H
Cutout Dimensions: 15⅞" W x 25¾" D x 34⅞" H



20-In 4.4 Cu. Ft. Compact Refrigerator

- Holds up to 100 cans at once.
- Built compact without sacrificing quality.

BLZ-SSRF126
Dimensions: 20.69" W x 20.88" D x 32¾" H
Cutout Dimensions: 22⅞" W x 24" D x 34¼" H



23.5-In 5.1 Cu. Ft. Outdoor Rated Double Drawer Refrigerator

- Holds up to 154 cans at once.
- Smooth, soft-close doors.
- Drawers include adjustable divider.

BLZ-SSRF-DBDR5.1
Dimensions: 23½" W x 23½" D x 33½" H
Cutout Dimensions: 24½" W x 26" D x 34¼" H



KITCHEN COMPONENTS

Refrigeration + Cooling (cont'd)



24-In 5.5 Cu. Ft. Outdoor Rated Refrigerator

- Spacious solution for stockpiling or for supplying larger events.
- Holds up to 152 cans for entertaining even the thirstiest party-goers.

BLZ-SSRF-5.5

Dimensions: 23.81" W x 23.63" D x 34.13" H
Cutout Dimensions: 24" W x 25¼" D x 34⅞" H



24-In 5.5 Cu. Ft. Outdoor Rated Beverage Cooler

- Holds up to 84 cans and 22 wine bottles, or 42 cans and 62 wine bottles—easily satisfying the varied tastes of diverse crowds.
- Choose bamboo shelving or glass shelves for personalized aesthetics.
- Bamboo shelving option easily converts the beverage center into a wine fridge.

BLZ-GDBEV-5.5

Dimensions: 23.81" W x 23.63" D x 34.13" H
Cutout Dimensions: 24" W x 25¼" D x 34⅞" H



50-Lb 15-In Outdoor Rated Ice Maker

- Produces up to 50 lb of cube-shaped ice per day.
- Energy Star™ rating saves on operating costs.
- Front-venting allows for installation straight into your kitchen island.
- Internal "cool blue" LED light adds style.

BLZ-ICEMKR-50GR

Dimensions: 14⅝" W x 24⅞" D x 33" H
Cutout Dimensions: 15⅜" W x 25¼" D x 34⅞" H



20-Inch 4.3 Cu. Ft. Compact Fridge

No outdoor kitchen is complete without the new 20-Inch 4.3 Cu. Ft. Compact Fridge. Featuring updated branding, a sleek, stylish design, and spacious interior, this fridge can hold all your food and beverages. With its durable construction and outdoor rating, this fridge is perfect for any kitchen configuration or as a standalone unit.

- LED interior digital controller displays the refrigerator's precise temperature.
- Capacity to hold 100 cans + interior lighting for greater visibility at any time of day.
- Locking mechanism + automatic alarm to alert you if the door is left ajar.
- Temperature range of 34–50°F, perfect for storing meat + beverages as needed.
- Reversible door handle and zero tolerance hinge allows the door to close flush.
- Flexible shelf positions let you organize the fridge your way.
- Durably built and outdoor rated for years of reliable use in any weather conditions
- Updated warranty protects the non-consumable compressor for 5 years, other non-consumable parts for 2 years, and offers replacement for 1 year.

BLZ-SSRF20-4.3

Dimensions: 20½" W x 22⅝" D x 33⅞" H
Cutout Dimensions: 20⅝" W x 25⅝" D x 33⅞" H



20-Inch 4.5 Cu. Ft. Beverage Cooler

Add a sophisticated touch to your outdoor setup with the new 20-Inch 4.5 Cu. Ft. Beverage Cooler. Inspired by our modern new brand look, this unit is designed to efficiently store your wines, beers, and more at the perfect temperature. Plus, its durable construction and outdoor rating promise reliable use for years to come.

- LED interior digital controller displays the refrigerator's precise temperature.
- Capacity to store 147 cans or 30 wine bottles + interior lighting for increased visibility.
- Locking mechanism + automatic alarm to alert you if the door is left ajar.
- Temperature range of 34–68°F, ideal for storing both red and white wines.
- Reversible door handle and zero tolerance hinge allows the door to close flush.
- Adjustable wire shelves give you complete control of the storage configuration.
- Energy Star™ and outdoor rated for efficient, reliable use in any outside conditions.
- Updated warranty protects the non-consumable compressor for 5 years, other non-consumable parts for 2 years, and offers replacement for 1 year.

BLZ-GDBEV20-4.5

Dimensions: 20½" W x 22⅝" D x 33⅞" H
Cutout Dimensions: 20⅝" W x 25⅝" D x 33⅞" H

DESIGN UPGRADES:

Stainless Steel Door Sleeve Upgrade for 20-In 4.4 Cu. Ft. Fridge

- Upgrade your 20-In 4.4 Cu. Ft. Compact Refrigerator with this stainless steel fridge door upgrade kit.

BLZ-SSFP-126/126LH

Stainless Steel Fridge Trim Kits

BLZ-TRIMKIT-126
BLZ-TRIMKIT-5.5/BEV5.5
BLZ-TRIMKIT-DR5.1
BLZ-TRIMKIT-4.3/4.5
BLZ-TRIMKIT-15
BLZ-TRIMKIT-ICEMKR





CABINETRY

Roll-Out Trash Drawers

Available as single trash/propane storage drawer, double trash/recycle drawer, and narrow single trash drawer models.



18-Inch Single Trash/Propane Drawer

BLZ-TRLP-DRW-H

Dimensions:
20¹/₈" W x 17³/₄" D x 26³/₈" H
Cutout Dimensions:
15³/₈" W x 25³/₄" D x 34³/₈" H



Double Trash/Recycle Drawer

BLZ-TREC-DRW-H

Dimensions:
19⁷/₈" W x 24¹/₈" D x 26³/₈" H
Cutout Dimensions:
18¹/₆" W x 23³/₈" D x 24³/₈" H



Narrow Trash Drawer

BLZ-TRNW-DRW-H

Dimensions:
13⁷/₈" W x 19⁵/₈" D x 26³/₈" H
Cutout Dimensions:
12" W x 18³/₄" D x 24³/₈" H

Access Doors

All Blaze cabinetry is produced in the USA and comes standard with soft-close doors and drawers equipped with automatic on/off LED lights.



Single Access Vertical Doors

18-INCH

BLZ-SV-1420-R-SC

Dimensions: 16⁵/₈" W x 22¹/₂" H
Cutout Dimensions: 14¹/₄" W x 20¹/₄" H

21-INCH

BLZ-SINGLE-2417-R-SC

Dimensions: 19³/₈" W x 26¹/₂" H
Cutout Dimensions: 17" W x 24¹/₄" H



Single Access Horizontal Doors

28-INCH

BLZ-SH-2417-R-SC

Dimensions: 26¹/₂" W x 19³/₈" H
Cutout Dimensions: 24¹/₄" W x 17" H



Double Access Doors

25-INCH

BLZ-AD25-R-SC

Dimensions: 23¹/₂" W x 20³/₈" H
Cutout Dimensions: 21³/₈" W x 18¹/₄" H

32-INCH

BLZ-AD32-R-SC

Dimensions: 30⁷/₈" W x 20³/₈" H
Cutout Dimensions: 28³/₄" W x 18¹/₄" H

40-INCH

BLZ-AD40-R-SC

Dimensions: 37³/₄" W x 20³/₈" H
Cutout Dimensions: 35³/₄" W x 18¹/₄" H

Access Drawers

Blaze sliding drawers feature an easy-close assist mechanism that shuts drawers with a soft touch as well as a light source.



16-Inch Double Access Drawer

BLZ-DRW2-R-LT

Dimensions:
17³/₈" W x 22¹/₂" D x 21³/₄" H
Cutout Dimensions:
15³/₈" W x 21" D x 19⁵/₈" H



16-Inch Triple Access Drawer

BLZ-DRW3-R-LT

Dimensions:
17³/₈" W x 22³/₄" D x 29⁵/₈" H
Cutout Dimensions:
15³/₈" W x 21" D x 27⁵/₈" H



30-Inch Triple Access Drawer

BLZ-30W-3DRW-LT

Dimensions:
30" W x 22¹/₂" D x 29⁵/₈" H
Cutout Dimensions:
27⁷/₈" W x 21" D x 27⁵/₈" H

Combo Door + Drawers

Available in a 32" double-drawer and 39" triple-drawer model, complete with an easy-close assist design that softly shuts the sliding drawers to prevent damage.



32-Inch Access Door + Double Drawer Combo

BLZ-DDC-R-LTSC

Dimensions: 32¹/₄" W x 22³/₄" D x 21¹/₄" H
Cutout Dimensions: 30¹/₄" W x 20³/₄" D x 19¹/₂" H



39-Inch Access Door + Triple Drawer Combo

BLZ-DDC-R-39-LTSC

Dimensions: 39¹/₄" W x 22¹/₂" D x 21¹/₄" H
Cutout Dimensions: 37⁵/₈" W x 20⁵/₈" D x 19¹/₂" H





CABINETS

Accessory Components



Kamado Island Sleeve With Drawer

- 304 stainless steel construction provides ultimate durability in outdoor settings.
- Large drawer stores charcoal, tools, and accessories with ease.
- Allows you to build your kamado into an outdoor kitchen for a finished look.

BLZ-KMDO-SLV-LT

Dimensions: 34" W x 32½" D x 33⅞" H
Cutout Dimensions: 31¼" W x 29⅝" D x 33⅜" H



Ice Drawer

- Stainless steel slide-out ice drawer offers ample storage for your beverages and holds up to 50 lb of ice.

BLZ-ICE-DRW-H

Dimensions: 27¾" W x 21" D x 21⅞" H
Cutout Dimensions: 26¼" W x 21" D x 19¾" H



Beverage Center

- Hot/cold water faucet + built-in soap dispenser.
- Sliding, removable cutting board + bottle opener and cap catcher.
- Removable, 3-part condiment tray + towel rack.
- Insulated ice bin + front bottle storage with drain holes for access and cleaning.

BLZ-30CKT-SNK

Dimensions: 30" W x 25⅞" D x 28" H
Cutout Dimensions: 28⅞" W x 23⅞" D x 9" H



Paper Towel Holder

BLZ-ICE-DRW-H

Dimensions: 16¼" W x 10⅞" D x 10¾" H
Cutout Dimensions: 14⅞" W x 8⅞" D x 8¾" H



Dry Storage Cabinet

BLZ-DRY-STG2-SC

Dimensions: 32¼" W x 21⅞" D x 21¼" H
Cutout Dimensions: 30⅞" W x 19¾" D x 19½" H





Kitchen Islands

Fully loaded and easy-to-assemble, our outdoor kitchens feature configurations to suit your specific style and space.

MODULAR ISLANDS

LTE+ Outdoor Kitchen Collection 48

INSTANT ISLAND

Stainless Steel Outdoor Kitchen 49

The dimensions listed in the following pages are subject to change and should be used for informational purposes only. Please check your product owner’s manual to verify cutout information.





MODULAR ISLANDS

LTE+ Outdoor Kitchen Collection

They're more than outdoor kitchens. They are the result of hundreds of hours of meticulous research and an unyielding drive to enhance your outdoor cooking experience.

Each of these five kitchen configurations consists of easy-to-assemble modules and combines the quality and efficiency of a premium LTE+ grill with an ultra-luxury pre-made structure. It's everything you'd expect from a Blaze outdoor kitchen collection—and a little more for good measure.

FEATURES:

NACRAE™ Finish (2 options)

Full interior + exterior super durable anti-microbial powder coating on all components.

- Gunmetal
- Architectural Bronze

Dekton® Countertop (2 options)

2 cm thick, non-porous material with resistance to UV rays, extreme heat and cold, plus scratches and stains.

- Keon
- Aeris

LTE+ Gas Grill

Available in 4 or 5-burner models, with a 4-burner marine grade option.

24-Inch Outdoor Rated Refrigerator

5.5 cu. ft. stainless steel compact fridge.

16.5-Inch Outdoor Rated Sink + Faucet

Stainless steel w/ hot + cold water connections.



Sunrise
8' Cabinetry



Morning Glow
10' Fridge + Cabinetry



High Noon
10' Cabinetry



Golden Hour
10' Cabinetry Fridge + Sink



Sunset
10' Sink + Cabinetry

INSTANT ISLAND

Stainless Steel Outdoor Kitchen



The Stainless Steel Outdoor Kitchen Island allows you to add an outdoor kitchen island to your home without any of the hard work.

Designed to be set and ready in an hour, this island doesn't require surveying, pouring concrete, framing an island or cabinets, applying a stone or brick facing, or installing a countertop.

Best of all, it's made to fit a 32-inch built-in Blaze LTE or LTE+—the bestselling grills in our history.

Its stainless steel construction and ample storage make for a clean, complete unit that is just as easily disassembled as it is constructed, should you move or want to change locations.

The Stainless Steel Outdoor Kitchen Island does not come with an LTE or LTE+. Each component is sold separately.

- Handcrafted in the USA.
- Constructed with rust and corrosion resistant 304 stainless steel.
- Complete with an under-the-grill cabinet and multiple soft-close drawers for ample storage space, plus a pull-out trash bin.
- Backed by a best-in-class, lifetime warranty.

BLZ-SS-ISLAND

Dimensions: 72¹¹/₁₆" W x 22¹/₈" D x 34⁷/₈" H





Outdoor Living

Premium performance and exceptional design aren’t just reserved for our grills and kitchens—our fire fixtures prove it.

FIRE FIXTURES

Fire Pit Table	52
Fire Bowl	53

The dimensions listed in the following pages are subject to change and should be used for informational purposes only. Please check your product owner’s manual to verify cutout information.





60-INCH

Fire Pit Table



Create a cozy space to commune with the Fire Pit Table, beautifully handcrafted in the USA.

Made from glass fiber reinforced concrete (GFRC), this unit offers a simplified silhouette and a weathered, rustic finish, fitted with a brass burner system.

It is uniquely designed with a convenient access door to conceal an included 11-pound propane tank, and its exclusive phantom finish complements any outdoor aesthetic.

BLZ-60-FTABLE-LP/NG
Dimensions: 30" W x 60" L x 19" H

- Constructed of ultra-durable glass-fiber reinforced concrete (GRFC) that is heat, weather, and rust resistant.
- Heat output of 60,000 BTUs with propane or natural gas versions efficiently maintains temperatures.
- Maximum burn time of 12 hours on low and a minimum of 4 hours on high.
- CSA-certified to meet the highest industry standards and our own.
- Comes with an 11-pound propane tank, a protective cover, and lava rock media.
- Key valve and match-lit ignition for simple lighting.
- Provides our tallest, brights, and fullest flame.
- Unit is safe for use on wooden decks.
- Backed by a 5-year limited warranty on the fire table body and 2-year limited warranty on internal components.
- Handcrafted by skilled artisans in the USA.



38-INCH

Fire Bowl



The Fire Bowl is constructed in an elegant rustic finish that fits beautifully into all backyard settings.

Handcrafted in the USA by skilled artisans, this fire bowl features a premium brass burner and is available for use with either propane or natural gas.

Its phantom color complements any outdoor decor, and the battery-operated push-button ignition makes it simple to use in any situation.

BLZ-38-FBOWL-LP/NG
Dimensions: 38" W x 38" L x 14½" H

BLZ-38-FBOWL-LP-TCOVER
Dimensions: 21½" W x 21" D x 18" H

- Heat output of 120,000 BTUs propane or 85,000 BTUs with natural gas.
- Handcrafted in the USA, constructed of glass-fiber reinforced concrete (GFRC), and fitted with an inner steel frame and brass burner system.
- Maximum burn time of 7 hours on low and a minimum of 3.5 hours on high.
- CSA-certified to meet the highest industry standards and our own.
- Matching 20 lb propane tank cover that doubles as an end table, sold separately.
- Includes fire bowl leveling feet and brass burner, lava rock media, vinyl storage cover, and lifting strap.
- Battery-operated push-button ignition makes lighting simple.
- Heat, weather, and rust-resistant to ensure unit is protected against the elements.
- Backed by a 5-year limited warranty on the fire bowl body and 2-year limited warranty on internal components.

FIRE FIXTURES



Blaze has a new look to reflect our commitment to innovation and crafting the most efficient outdoor living products. It may be a different aesthetic, but we're the same Blaze.

6620 Greenwell Springs Rd. Baton Rouge, LA 70805
Toll Free: 1-866-976-9510
customerservice@blazegrills.com

Copyright © January 2025 Blaze®. All Rights Reserved.



HOMEA
www.homea.mx
 Email: ventas@homea.mx
 Whatsapp: (446)144.6318 Tel: (442)216.3552

LISTA DE PRECIOS 2025
PRECIOS EN DOLARES. NO INCLUYEN IVA
 A PARTIR DEL 31 JULIO 2025

ASADORES DE GAS , CARBON Y ELECTRICO		P.LISTA
BLZ-3LBM-LP/NG	3 BURNER LBM BLAZE GRILL 25"	\$ 2,600
BLZ-4LBM-LP/NG	4 BURNER LBM BLAZE GRILL 32"	\$ 3,300
BLZ-4LTE2-LP/NG	4 BURNER BLAZE LTE GRILL WITH LIGHTS 32"	\$ 3,700
BLZ-5LTE2-LP/NG	5 BURNER BLAZE LTE GRILL WITH LIGHTS 40"	\$ 4,390
BLZ-4LTE3-LP/NG	NEW 4 BURNER LTE PLUS	\$ 4,150
BLZ-5LTE3-LP/NG	NEW 5 BURNER LTE PLUS	\$ 4,900
BLZ-4LTEPRO-LP/NG	NEW LTE PRO 32"	\$ 5,920
BLZ-5LTEPRO-LP/NG	NEW LTE PRO 40"	\$ 6,500
BLZ-3PRO-LP/NG	3 BURNER BLAZE PRO GRILL 34"	\$ 6,522
BLZ-4PRO-LP/NG	4 BURNER BLAZE PRO GRILL 44"	\$ 7,912
BLZ-4LTE2MG-LP/NG	BLAZE 4LTE2 MARINE GRADE GRILL 32"	\$ 5,480
BLZ-4LTE3MG-LP/NG	NEW 4 BURNER MARINE GRADE LTE PLUS	\$ 5,850
KAMADO		
BLZ-20-KAMADO	BLAZE KAMADO 20"	\$ 4,450
BLZ-20-KMDO-CART-SC	NEW BLAZE KAMADO CART WITH STORAGE	\$ 2,750
BLZ-KMDO-SLV-LT	BLAZE KAMADO SLEEVE WITH DRAWER	\$ 2,552
BLZ-KMDO-2-ROTIS	BLAZE ROTISSERIE FOR THE 20" KAMADO	\$ 350
PLANCHA TEPPANYAKI		
BLZ-GRIDDLE-LTE-LP/NG	BLAZE LTE GRIDDLE	\$ 3,550
BLZ-GRIDDLE-CART-SC	BLAZE GRIDDLE BASIC CART ONLY	\$ 1,290
BLZ-GRIDDLE-LTE3-LP/NG	NEW LTE 30 GRIDDLE	\$ 4,606
BLZ-GRIDDLE40-LP/NG	NEW LTE PRO 40 GRIDDLE	\$ 6,010
BLZ-GRIDDLE-CART-SC2	NEW LTE 30 INCH GAS GRIDDLE CART	\$ 1,403
BLZ-GRIDDLE40-CART-LTSC	NEW LTE PRO 40 INCH GAS GRIDDLE CART	\$ 1,550
HORNO DE PIZZA		
BLZ-26-PZOVN-LP/NG	BLAZE PIZZA OVEN	\$ 4,130
BLZ-26-PZOVN-CART	BLAZE CART FOR PIZZA OVEN	\$ 1,291
BLZ-26-PZOVN-TBL	TABLE TOP STAND FOR PIZZA OVEN	\$ 946
QUEMADORES LATERALES Y SUPER QUEMADORES		
BLZ-SB1-LP/NG	BLAZE DROP-IN SINGLE SIDE BURNER	\$ 742
BLZ-SB2LTE-LP/NG	BLAZE LTE DOUBLE SIDE BURNER WITH LIGHTS	\$ 1,390
BLZ-SB2-LTE3-LP/NG	NEW LTE PLUS DOUBLE SIDE BURNER	\$ 1,550
BLZ-PBLTE-LP/NG	BLAZE LTE POWER BURNER	\$ 2,578
BLZ-PBLTE3-LP/NG	NEW LTE PLUS POWER BURNER	\$ 2,610
BLZ-PROPB-LP/NG	BLAZE PROFESSIONAL POWER BURNER	\$ 2,600



HOMEA
 www.homea.mx
 Email: ventas@homea.mx
 Whatsapp: (446)144.6318 Tel: (442)216.3552

LISTA DE PRECIOS 2025
PRECIOS EN DOLARES. NO INCLUYEN IVA
 A PARTIR DEL 31 JULIO 2025

COMBOS BAJO ASADOR			
BLZ-DDC-R-LTSC	BLAZE DOOR/DRAWER COMBO 32"	\$	1,486
BLZ-DDC-R-39-LTSC	BLAZE DOOR/DRAWER COMBO 39"	\$	1,636
BLZ-DRY-STG2-SC	BLAZE DRY STORAGE	\$	2,333
PUERTAS SENCILLAS Y DOBLES			P.LISTA
BLZ-SINGLE 2417-R-SC	BLAZE SINGLE ACCESS VERTICAL DOOR 24 X17	\$	641
BLZ-SH-2417-R-SC	BLAZE SINGLE ACCESS HORIZONTAL DOOR 17 X 24	\$	641
BLZ-SV-1420-R-SC	BLAZE SINGLE ACCESS VERTICAL DOOR 14 X 20	\$	591
BLZ-AD25-R-SC	BLAZE 3 DOUBLE ACCESS DOOR	\$	647
BLZ-AD32-R-SC	BLAZE 4 DOUBLE ACCESS DOOR	\$	682
BLZ-AD40-R-SC	BLAZE 5 DOUBLE ACCESS DOOR	\$	809
GABINETES CON CAJONES			
BLZ-DRW2-R-LT	BLAZE DOUBLE DRAWER SET	\$	1,093
BLZ-DRW3-R-LT	BLAZE TRIPLE DRAWER SET	\$	1,378
BLZ-30W-3DRW-LT	BLAZE 30 INCH TRIPLE ACCESS DRAWER	\$	2,047
REFRIGERADORES PARA EXTERIOR			
BLZ-SSRF126	BLAZE 20" COMPACT REFRIGERATOR 4.4 CF	\$	1,032
BLZ-SSRF-15	BLAZE 15" OUTDOOR REFRIGERATOR 3.2 CF	\$	1,700
BLZ-SSRF-4.3	NEW 20 IN 4.3 CU.FT. OUTDOOR RATED COMPACT FRIDGE	\$	2,590
BLZ-SSRF-5.5	BLAZE 24" OUTDOOR SOLID SS DOOR REFRIGERATOR 5.5 CF	\$	3,250
BLZ-GDBEV-4.5	NEW 20 IN 4.5 CU.FT. OUTDOOR RATED BEVERAGE COOLER	\$	2,755
BLZ-GDBEV-5.5	BLAZE 24" OUTDOOR GLASS DOOR BEVERAGE COOLER 5.5	\$	3,390
BLZ-SSFP-126	BLAZE STAINLESS FRONT DOOR UPGRADE FOR SSRF126 RIGHT HINGE	\$	332
BLZ-SSFP-126 LH	BLAZE STAINLESS FRONT DOOR UPGRADE FOR SSRF126 LEFT HINGE	\$	332
CAJONES REFRIGERANTES			
BLZ-SSRF-DBDR5.1	BLAZE DOUBLE DRAWER 5.1 cu ft REFRIGERATOR	\$	4,300
MAQUINA DE HIELOS PARA EXTERIOR			
BLZ-ICEMKR-50GR	BLAZE 50 LB 15" OUTDOOR ICE MAKER	\$	4,300
BEVERAGE CENTER			
BLZ-30CKT-SNK	BLAZE BEVERAGE CENTER	\$	2,770
CAMPANAS			
BLZ-36-VHOOD	BLAZE OUTDOOR 36" VENT HOOD	\$	2,900
BLZ-42-VHOOD	BLAZE OUTDOOR 42" VENT HOOD	\$	4,050
BLZ-48-VHOOD	BLAZE 48" VENT HOOD	\$	4,500
BLZ-36-VHOOD-DCVR-12	NEW LOW-CEILING EXTENDABLE VENT HOOD DUCT COVER	\$	658
BLZ-36-VHOOD-DCVR-22	NEW HIGH-CEILING EXTENDABLE VENT HOOD DUCT COVER	\$	821
BLZ-42-VHOOD-DCVR-12	NEW LOW-CEILING EXTENDABLE VENT HOOD DUCT COVER	\$	732
BLZ-42-VHOOD-DCVR-22	NEW HIGH-CEILING EXTENDABLE VENT HOOD DUCT COVER	\$	896
BLZ-48-VHOOD-DCVR-12	NEW LOW-CEILING EXTENDABLE VENT HOOD DUCT COVER	\$	821
BLZ-48-VHOOD-DCVR-22	NEW HIGH-CEILING EXTENDABLE VENT HOOD DUCT COVER	\$	971
PULL OUT BASUREROS Y OTROS ACCESORIOS			
BLZ-PTH-R-H	BLAZE PAPER TOWEL HOLDER	\$	541
BLZ-TRLP-DRW-H	BLAZE LP TANK/TRASH DRAWER	\$	1,012
BLZ-TRNW-DRW-H	BLAZE NARROW TRASH DRAWER	\$	990
BLZ-TREC-DRW-H	BLAZE ROLL OUT TRASH/RECYCLE DRAWER	\$	1,372
BLZ-ICE-DRW-H	BLAZE ICE BIN/WINE CHILLER DRAWER	\$	1,580



HOMEA
www.homea.mx
 Email: ventas@homea.mx
 Whatsapp: (446)144.6318 Tel: (442)216.3552

LISTA DE PRECIOS 2025
PRECIOS EN DOLARES. NO INCLUYEN IVA
 A PARTIR DEL 31 JULIO 2025

ROSTICEROS, QUEMADORES INFRARROJOS , SMOKERS Y PLANCHAS			
BLZ-IRN	BLAZE INFRARED BURNER FOR GRILL	\$	210
BLZ-PRO-IR	BLAZE INFRARED BURNER FOR PROFESSIONAL GRILL	\$	534
BLZ-SMBX	BLAZE SMOKER BOX FOR GRILL	\$	74
BLZ-PRO-SMBX	BLAZE PRO SMOKER BOX	\$	95
BLZ-XL-PROSMBX	BLAZE PROFESSIONAL XL SMOKER BOX	\$	209
BLZ-XL-SMBX	BLAZE XL TRADITIONAL SMOKER BOX	\$	184
BLZ-CRM-TMR	CERAMIC FLAME TAMER FOR GAS GRILLS	\$	95
BLZ-CRM-TMR4	CERAMIC FLAME TAMER FOR GAS GRILLS - SET OF 4	\$	395
BLZ-CRM-TMR5	CERAMIC FLAME TAMER FOR GAS GRILLS - SET OF 5	\$	496
BLZ-34-ROTIS-SS	BLAZE ROTISSERIE KIT FOR 4 BURNER GRILLS	\$	345
BLZ-5-ROTIS-SS	BLAZE ROTISSERIE KIT FOR 5 BURNER GRILLS	\$	386
BLZ-14-SSGP	STAINLESS STEEL GRIDDLE PLATE 14"	\$	533
BLZ-24-SSGP	STAINLESS STEEL GRIDDLE PLATE 24"	\$	659
CARRITOS PARA ASADOR			P.LISTA
BLZ-3-CART-SC	BLAZE 3 BURNER BASIC CART ONLY	\$	1,247
BLZ-4-CART-SC	BLAZE 4 BURNER/CHARCOAL BASIC CART ONLY	\$	1,291
BLZ-5-CART-SC	BLAZE 5 BURNER BASIC CART ONLY	\$	1,403
BLZ-3PRO-CART-LTSC	BLAZE 3PRO BURNER CART ONLY	\$	2,644
BLZ-4PRO-CART-LTSC	BLAZE 4PRO BURNER CART ONLY	\$	3,074
BLZ-4LTEPRO-CART-LTSC	NEW LTE PRO 32 INCH 4 BURNER GAS GRILL CART	\$	1,403
BLZ-5LTEPRO-CART-LTSC	NEW LTE PRO 40 INCH 5 BURNER GAS GRILL CART	\$	1,550
CUBIERTAS DE VINIL PARA ASADORES			
3BICV	3 BURNER BUILT IN COVER	\$	102
4BICV	4 BURNER BUILT IN COVER	\$	114
5BICV	5 BURNER BUILT IN COVER	\$	150
3CTCV	3 BURNER CART COVER	\$	114
4CTCV	4 BURNER CART COVER	\$	150
5CTCV	5 BURNER CART COVER	\$	160
3PROBICV	3 BURNER PRO BUILT IN COVER	\$	150
3PROCTCV	3 BURNER PRO CART COVER	\$	193
4PROBICV	4 BURNER PRO BUILT IN COVER	\$	169
4PROCTCV	4 BURNER PRO CART COVER	\$	195
GRDBICV	BUILT-IN COVER FOR THE BLAZE GRIDDLE	\$	74
2SBBICV	SB2 BUILT-IN COVER	\$	74
PBBICV	POWER BURNER BUILT-IN COVER	\$	89
26PZOVN-BICV	PIZZA OVEN BUILT IN COVER	\$	74



HOMEA
www.homea.mx
 Email: ventas@homea.mx
 Whatsapp: (446)144.6318 Tel: (442)216.3552

LISTA DE PRECIOS 2025
PRECIOS EN DOLARES. NO INCLUYEN IVA
 A PARTIR DEL 31 JULIO 2025

INSULATED JACKETS		
BLZ-3-IJ	BLAZE INSULATED JACKET 3 BURNER	\$ 990
BLZ-4-IJ	BLAZE INSULATED JACKET 4 BURNER	\$ 1,096
BLZ-5-IJ	BLAZE INSULATED JACKET 5 BURNER	\$ 1,265
BLZ-3PRO-IJ	BLAZE 3 PRO INSULATED JACKET	\$ 1,434
BLZ-4PRO-IJ	BLAZE 4 PRO INSULATED JACKET	\$ 1,687
BLZ-GRIDDLE-IJ	BLAZE GRIDDLE INSULATED JACKET	\$ 1,464
BLZ-SB2-IJ	BLAZE INSULATED JACKET DOUBLE SIDE BURNER	\$ 709
BLZ-PB-IJ	BLAZE POWER BURNER INSULATED JACKET	\$ 792
BLZ-PROPB-IJ	BLAZE PRO POWER BURNER INSULATED JACKET	\$ 927
BLZ-4-IJ2	NEW INSULATED JACKET FOR LTE PRO 32 INCH 4 BURNER GRILL	\$ 1,096
BLZ-5-IJ2	NEW INSULATED JACKET FOR LTE PRO 40 INCH 5 BURNER GRILL	\$ 1,265
BLZ-GRIDDLE40-IJ	NEW INSULATED JACKET FOR LTE PRO 40 INCH 5 BURNER GRIDDLE	\$ 1,257
ISLAND		
BLZ-SS-ISLAND	BLAZE STAINLESS STEEL ISLAND	\$ 4,590
ACCESORIOS		
BLZ-PZST	BLAZE PIZZA STONE	\$ 235
BLZ-ISLAND VENT	ISLAND VENT	\$ 74
FIRE PIT		
BLZ-60-FTABLE-LP	60" RECTANGULAR FIREPIT TABLE-PROPANE-PHANTOM DARK	\$ 7,598
BLZ-38-FBOWL-LP	38" FIRE BOWL - PROPANE-PHANTOM DARK	\$ 7,598
BLZ-FBOWL-TCOVER	BLAZE PROPANE TANK COVER FIRE BOWL- PHANTOM DARK	\$ 993